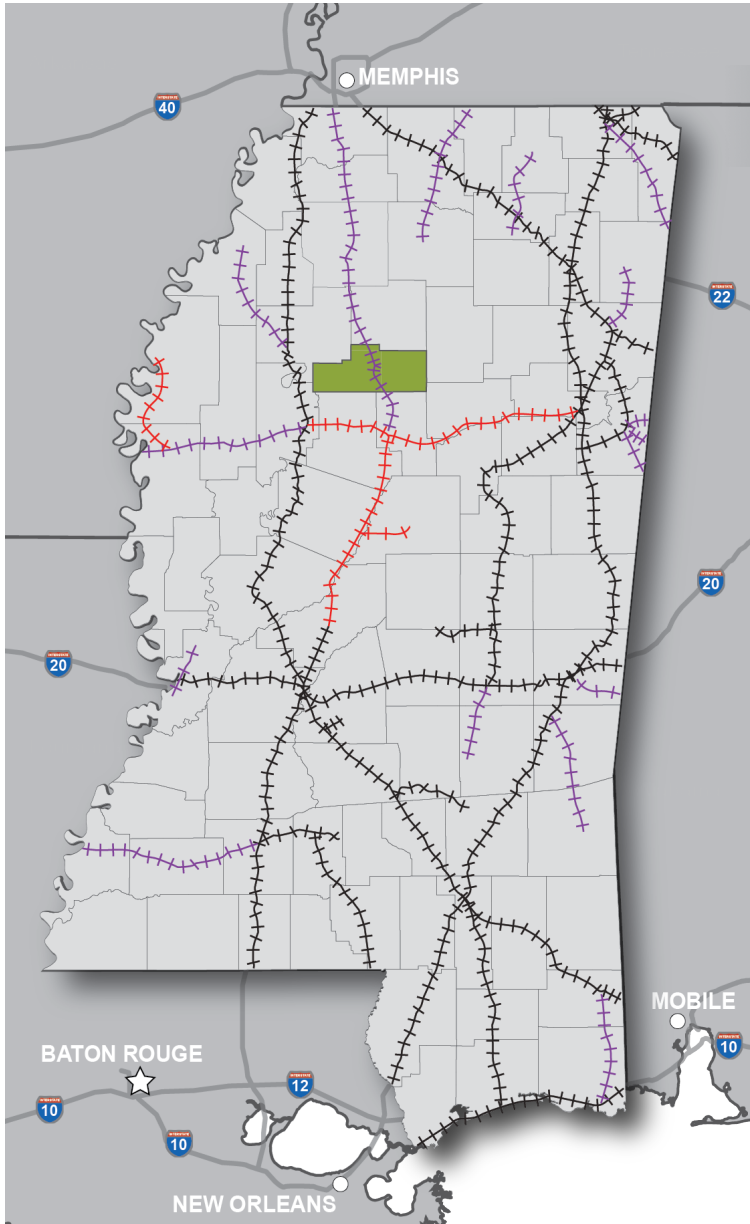




MISSISSIPPI IS A GREAT PLACE TO DO BUSINESS

Mississippi has incentives, workforce training and education through community colleges and research universities, transportation advantages, favorable tax structure and abundant energy resources.



Mississippi Railroads

Over 2,500 miles of mainline railroad track with access of 25,000 miles of tracking throughout North America

- Class-I Major
- Class-III Local
- Class-III Local (Out of Service)

<p>ROADS</p> <p>DIVIDED FOUR-LANE HIGHWAY INFRASTRUCTURE, SIX INTERSTATES, & 14 FEDERAL HIGHWAYS</p>	<p>RAIL</p> <p>30 RAIL CAR PROVIDERS, INCLUDING FIVE CLASS 1 RAILROADS, (2,500 MILES OF TRACK)</p>	<p>PORTS</p> <p>15 PORTS (2 DEEPWATER) ALONG THE GULF OF MEXICO, MISSISSIPPI RIVER, & TENNESSEE-TOMBIGBEE WATERWAY</p>	<p>AIR</p> <p>7 COMMERCIAL AIRPORTS (INCLUDING TWO INTERNATIONAL AIRPORTS)</p>
---	---	---	---